



Finding Home

Jesus' Invitation to a Transforming Friendship

"Make your home in me, and I will make my home in you."—Jesus

Spiritual Direction

An essential part of the Christian life is our readiness to live it. This involves relinquishing perceived needs and preferred wants, simply making ourselves available to Jesus. If the focus of our relationship with Christ is to "be productive," "make progress," or "solve problems," we will likely experience prolonged and painful spiritual silence. Like any meaningful relationship, a transforming friendship with Jesus grows out of a shared encounter based on mutual desire, openness, and receptivity.

Exploring

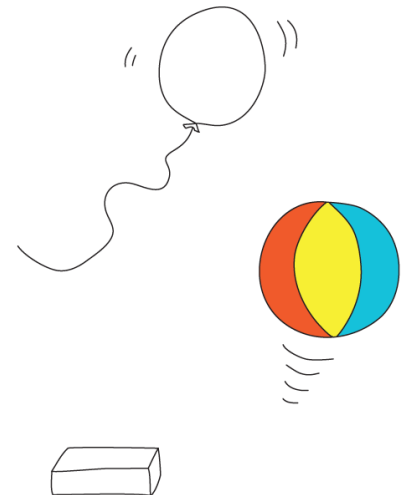
Consider which of these is your disposition of the will:

- **Willless**—"I am unable to direct my will to choose life, and instead, I get tossed about by random influences."

Willlessness calls for healing prayer and scaffolding for the soul, including spiritual disciplines and caring companions for the journey.

- **Willing**—"I relinquish (let go, release, yield, surrender) my expectations and needs, and am eagerly attentive and available to Jesus' invitations."
- **Willful**—"I make things happen/do it myself/know how to get results."

*Willfulness must give way to willingness and surrender. Mastery must yield to mystery.*¹



Question

A prayer to repeat during the next few days: "Jesus, I surrender to you my hopes, my dreams, and my ambitions. Do with them what you will, when you will, and as you will."² What words does Jesus impress upon you during this time?

¹ *Will and Spirit*, Gerald May, 2009.

² *Prayers of the Heart*, Richard Foster, 1994.